

Thank you for choosing our product

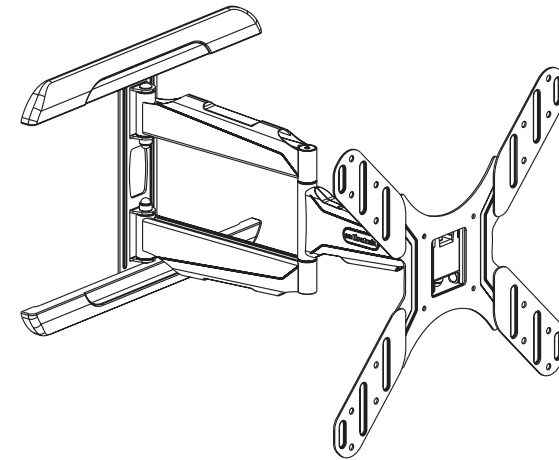
**⚠ Warning**

This product contains small items that could be a choking hazard if swallowed. Keep these items away from young children!

1. Make sure these instructions are read and completely understood before attempting installation. If you are unsure of any part of this installation, contact a professional installer for assistance.
2. The wall or mounting surface must be capable of supporting the combined weight of the mount and the display; otherwise the structure must be reinforced.
3. Safety gear and proper tools must be used. A minimum of two people are required for this installation. Failure to use safety gear can result in property damage, serious injury or death.

## INSTALLATION GUIDE

Item No.:PSW741M-A

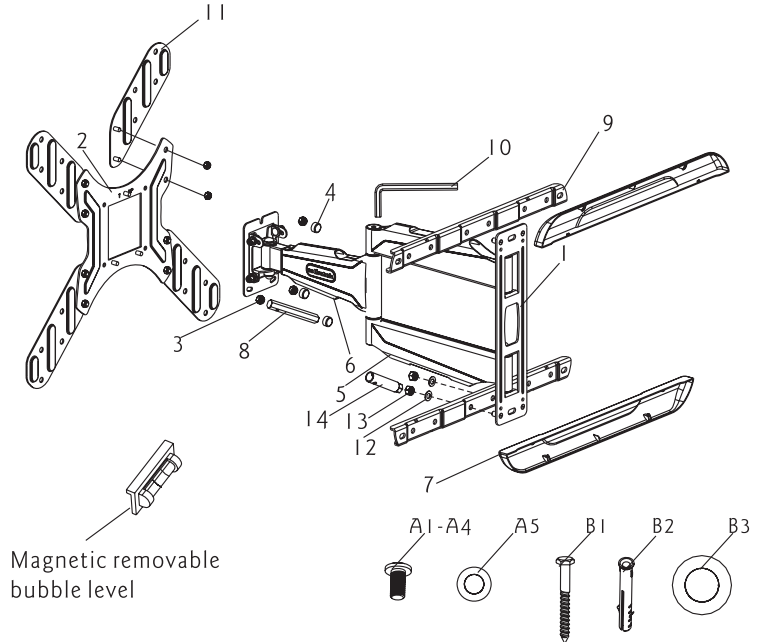


- TV Size Range: 32" to 47"
- Maximum Weight Capacity: 30 kg /66lbs
- Integrated Cable management
- VESA: 400x400
- Rotation:  $\pm 3^{\circ}$
- Inclination:  $-2^{\circ} \sim 12^{\circ}$

**⚠ CAUTION**

This product was designed to be installed on wood stud walls and solid concrete walls. Before installing make sure the supporting surface will support the combined load of the equipment and hardware. Never exceed the Maximum Load Capacity. This product is intended for indoor use only. Use of this product outdoors could lead to product failure or personal injury.

Hardware Kit:

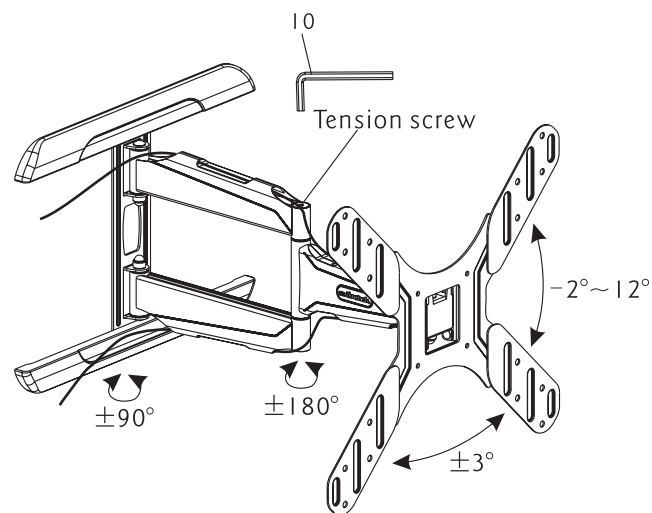


ID	Qty	Description
1	1	Wall Plate
2	1	TV Plate
3	7	M6 nut
4	3	Nut cap
5	2	Cable management clip 1
6	2	Cable management clip 2
7	2	Plastic cover
8	1	M6 wrench
9	2	Wall plate adaptor
10	1	6x6mm wrench
11	4	Extension plate

ID	Qty	Description
12	4	M8 washer
13	4	M8 nut
14	1	M8 wrench
A1	4	M4x12mm bolt
A2	4	M5x12mm bolt
A3	4	M6x12mm bolt
A4	4	M8x16mm bolt
A5	4	M5 Washer
B1	4	Long bolt
B2	4	Concrete anchor
B3	4	M8 Washer

## Part 6-Adjusting display and using cord management

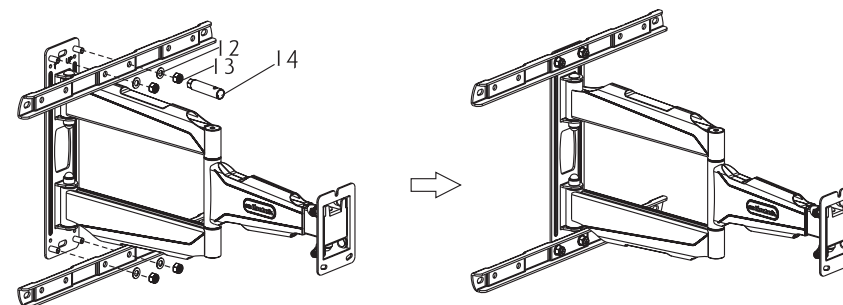
Route cords along articulating arms using cord management clip.  
Articulating arms can be adjusted to position display into desired location.  
Use allen wrench(10) to tighten and loosen the tension screw. Do not overtighten and do not loosen to the point the screws come out.



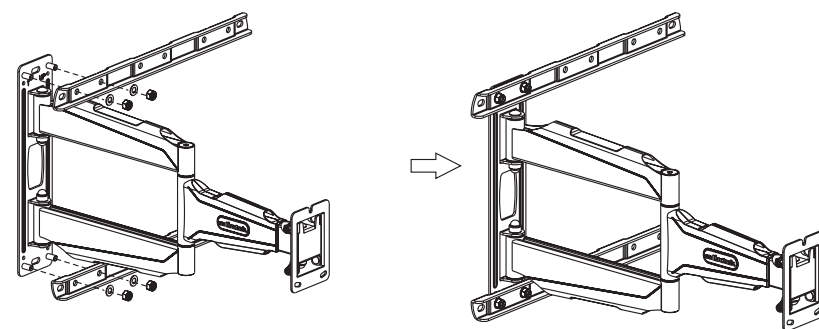
Cable management clip  
Cable routing access points

## Part 1-Attaching Wall Plate

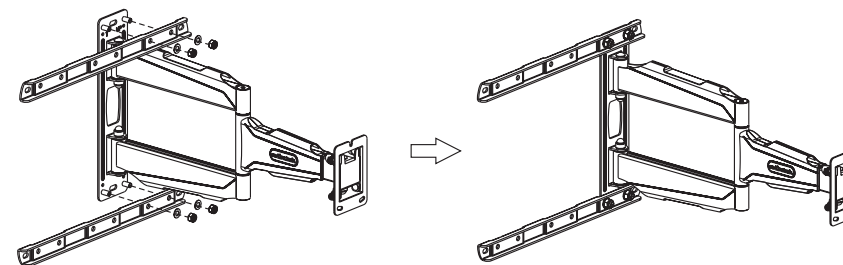
Below are 3 options to install the wall plate, please see below pictures:



Picture 1



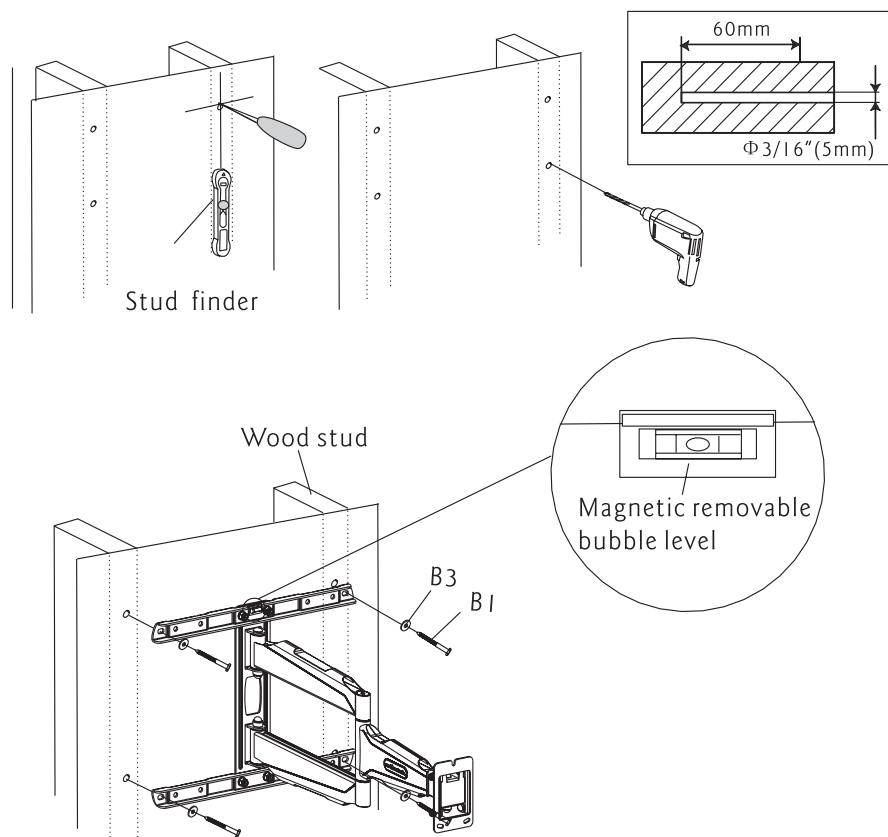
Picture 2



Picture 3

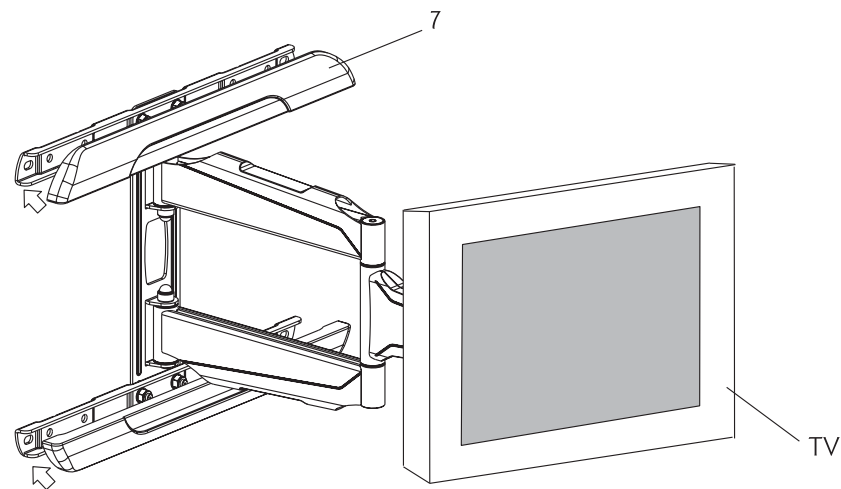
## Part 2a-Wood Stud Mounting

Use wall plate as a template, make sure it is level, and mark four mounting holes along the center lines of the wood studs. Drill four 3/16" (5mm) dia. holes 60mm deep. Level wall plate and attach to wall with four long bolts(B1) and four washers(B3). Tighten screws firmly. Do not overtighten.

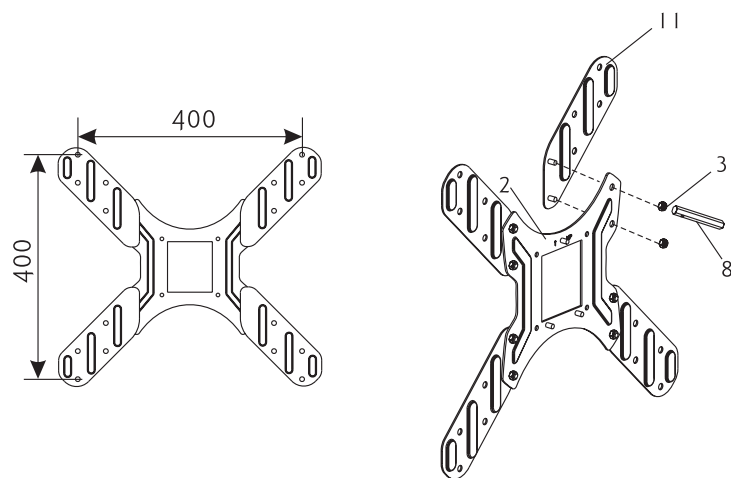


## Part 5-Attaching plastic covers to wall plate

Secure plastic covers over(7) wall plate by pushing them toward each other until they lock in place.

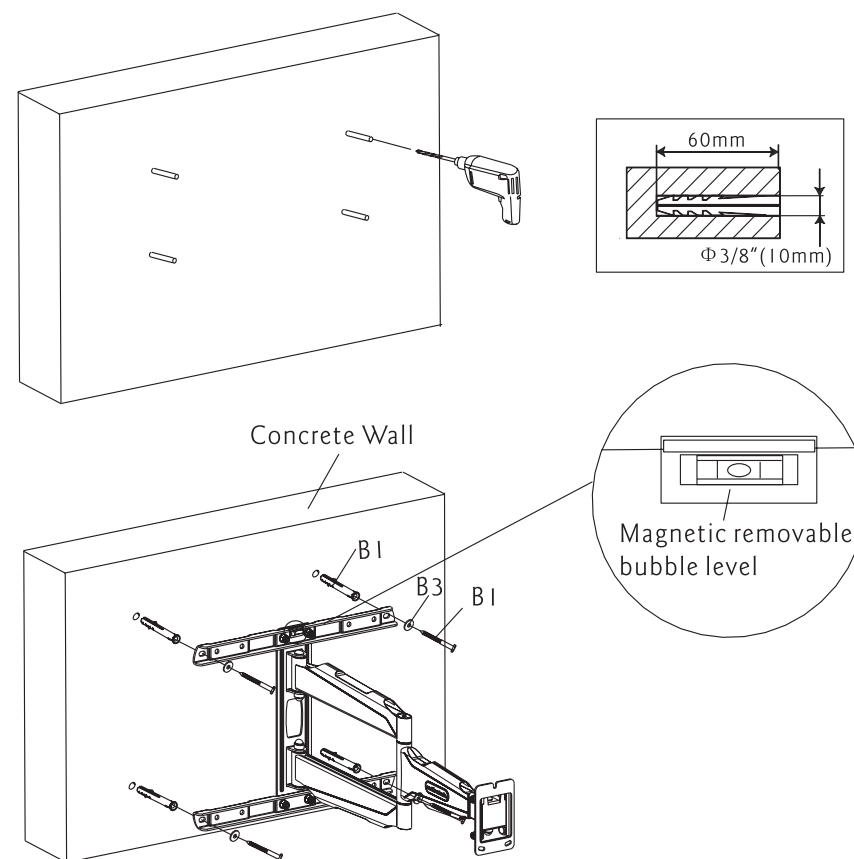


If the LCD hole pattern is larger than the TV Plate, you are required to use the Extension Plates to install.



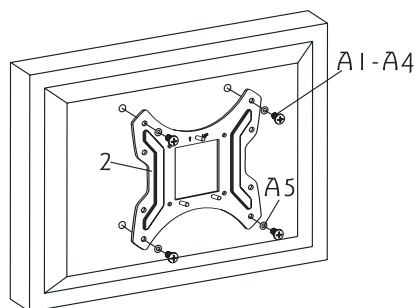
## Part 2b-Concrete Wall Mounting

Level wall plate and use wall as a template to mark four holes. Drill four 3/8" (10mm) dia. holes 60mm deep. Insert four anchors (B2) into holes and secure wall plate with four long bolts (B1) and four washers (B3). Tighten screws firmly. Do not overtighten.



### Part 3-Attaching TV Plate to screen

Center TV Plate vertically on back of screen. Select the small(A1),medium (A2 or A3) or large(A4) screws. Attach TV Plate to screen using four selected screws and four washers(A5) at the top and bottom of TV Plate(6).Tighten screws firmly. Do not overtighten.



### Part 4-Attaching TV Plate to wall plate

Tighten the nut(3) by M6 wrench(15) after hanging on the TV, do not overtighten.When fixed, please tighten these two lower nuts by M6 wrench as well, and press the nut cap(4) on. Use the M6 wrench to adjust the nuts on both sides of the wall mount to prevent them being loose.The TV plate is adjustable.

